

February 5, 2007

**Preliminary design plans, and final deferred maintenance plans, for the Westwood Complex; final design plans for Park Terrace Elementary**

At the January 23 School Board meeting, final design plans were approved for two major facilities improvement projects set to begin in the spring and summer.



*Above: Artist's preliminary conception of future main entrance for Westwood Intermediate School and Westwood Middle School, courtesy of Wold Architects & Engineers.*

*Left: Draft of overall site plan for the Westwood complex.*

**Westwood Intermediate and Westwood Middle School**

# Westwood Complex: Summer 2007, 2008, 2009

The Board heard a presentation and approved final deferred maintenance plans for work on the Westwood Complex to begin late spring/early summer 2007.

Two bid packages were approved, primarily for deferred maintenance, and for preliminary plans for the “in-fill” project to increase the size of both schools. Some highlights of the presentation:

## Westwood Complex

- Auto drop off will be separate from the bus drop off. Driving lanes could be widened to provide for two-way traffic. The new configuration will provide greater safety.
- Additional classrooms
- New service entrance for the kitchen
- Lunchroom expanded by 50 percent, ceiling raised
- Modifications to gymnasiums and academic areas
- Current cafeteria will be converted into classroom space
- Many windows will be replaced
- Installation of larger louvers will provide more fresh air
- Roof will be replaced in its entirety
- Westwood Intermediate and Westwood Middle Schools will share the same entrance area, but each will have separate and distinct reception and office areas.

## Westwood Intermediate

- Deferred maintenance items will include:
  - ♦ new air handling systems in classrooms
  - ♦ new finishes on floors
  - ♦ abate asbestos floor tile in classrooms and replace with carpeting
  - ♦ modifications to classroom casework
  - ♦ all bathrooms fully handicap-accessible
  - ♦ upgraded plumbing
  - ♦ upgraded finishes and lighting
  - ♦ boiler room systems and chillers replaced
  - ♦ windows replaced
- A service corridor will be incorporated between the two gyms
- Lockers will be incorporated inside classrooms
- Media center expansion

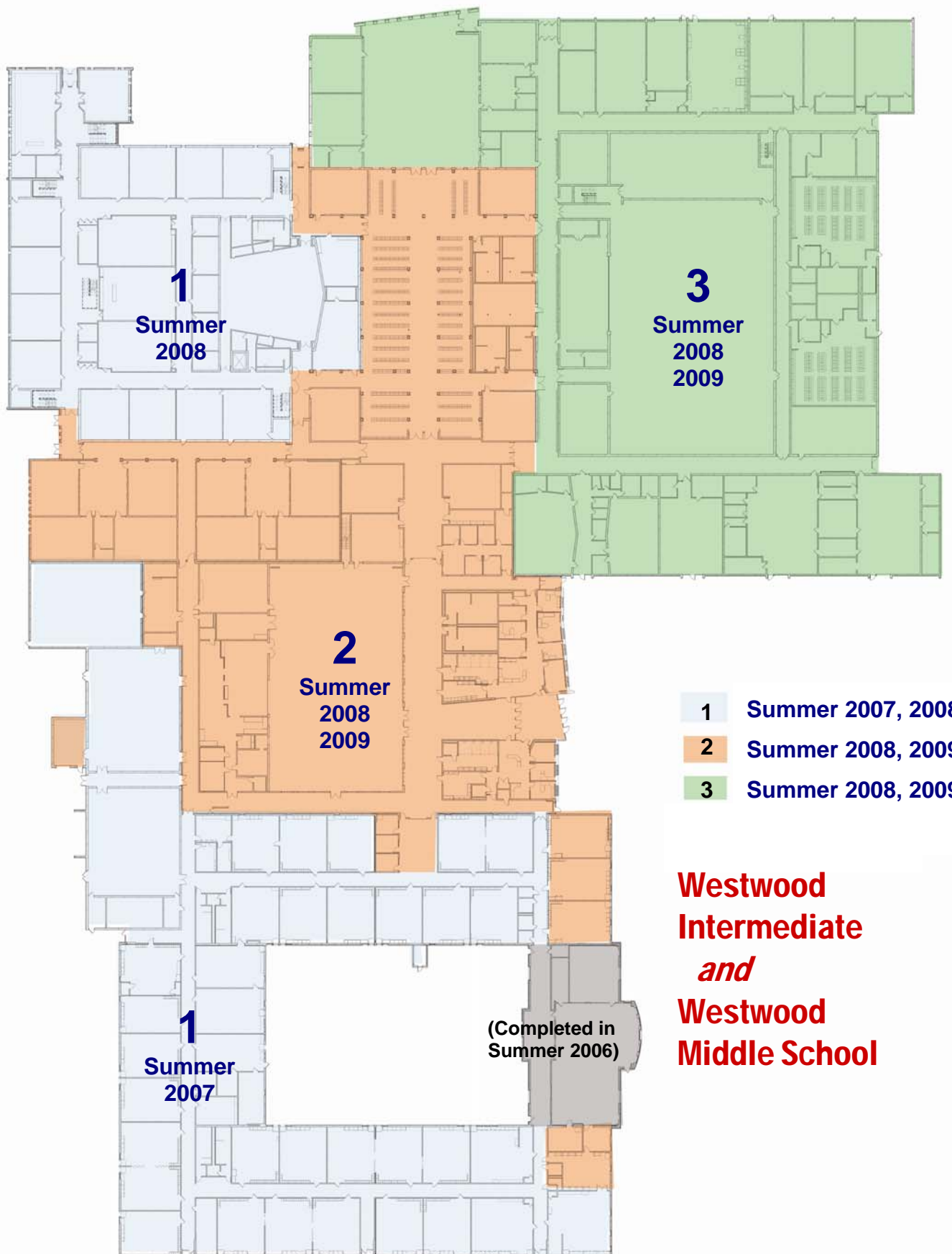
## Westwood Middle School

- Deferred maintenance projects will include:
  - ♦ refurbished mechanical systems
  - ♦ windows replaced when needed
  - ♦ new carpet in classrooms
  - ♦ asbestos abatement
  - ♦ program incorporated to clean duct work
  - ♦ plumbing and piping replacement
  - ♦ new air handling systems
  - ♦ incorporate same color palate in all schools

**Summer 2007 construction costs at the Westwood complex will be about \$9.8 million.**



East elevation. A view of what the “infill” project may look like in the future.



**Westwood  
Intermediate  
*and*  
Westwood  
Middle School**

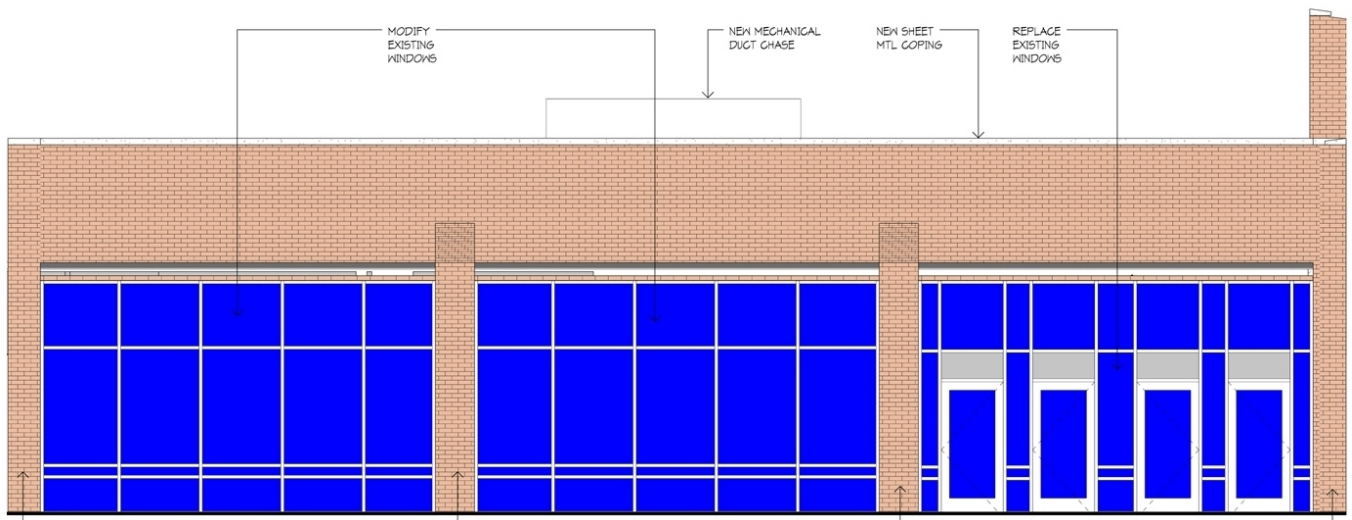


**Preliminary Plans**  
**Westwood**  
**Intermediate**  
*and*  
**Westwood**  
**Middle School**

**Building plan,**  
**interior**



1 BUILDING PLAN  
 3/4" = 1'-0"



***Park Terrace's current three sets of doors in the main entrance will be reduced to one. The main office and security/greeter desk will be relocated closer to the main entrance.***

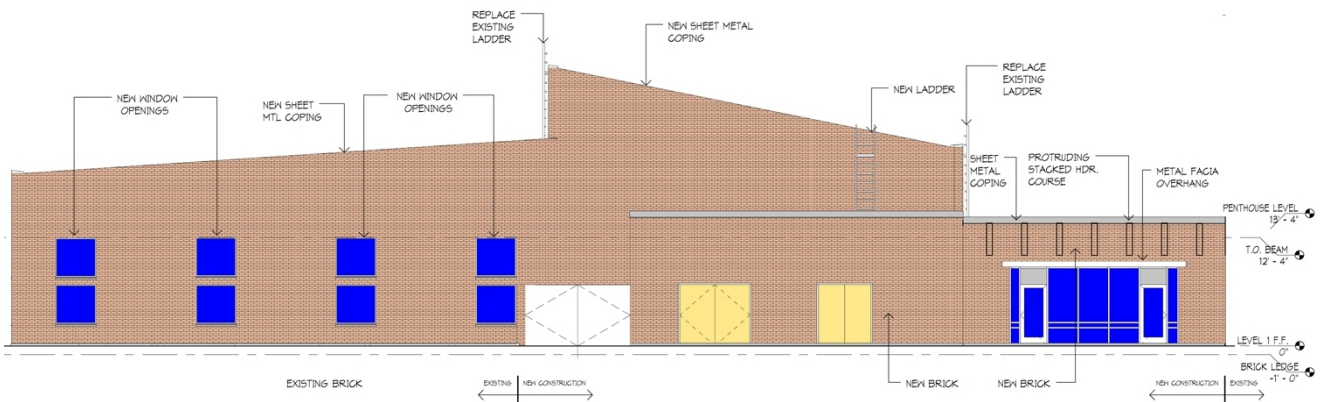
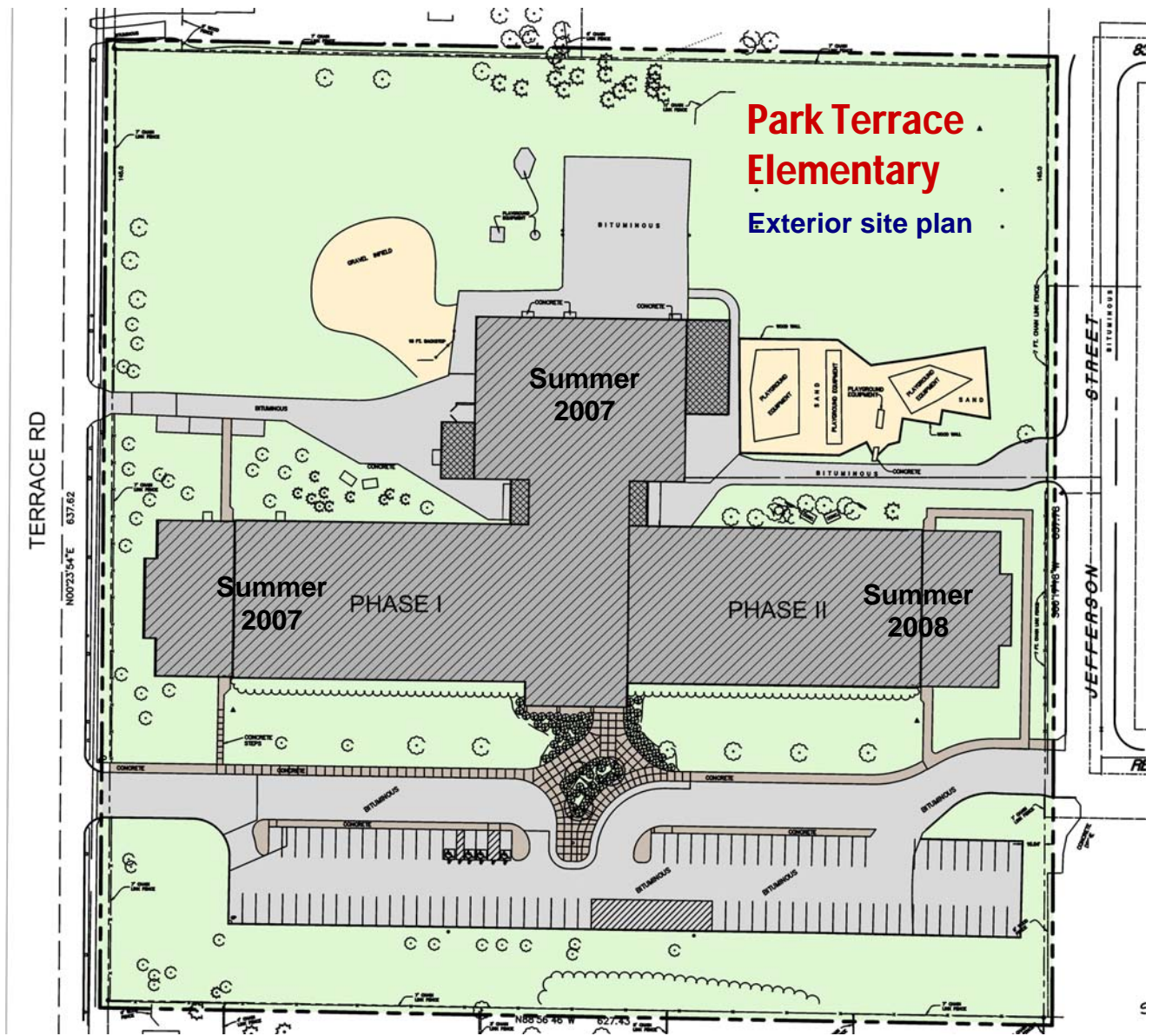
## **Park Terrace Elementary: Summer 2007, 2008**

***The Board heard a presentation and approved final plan designs for work on Park Terrace Elementary to begin late spring/early summer 2007.***

### ***Some highlights of the presentation:***

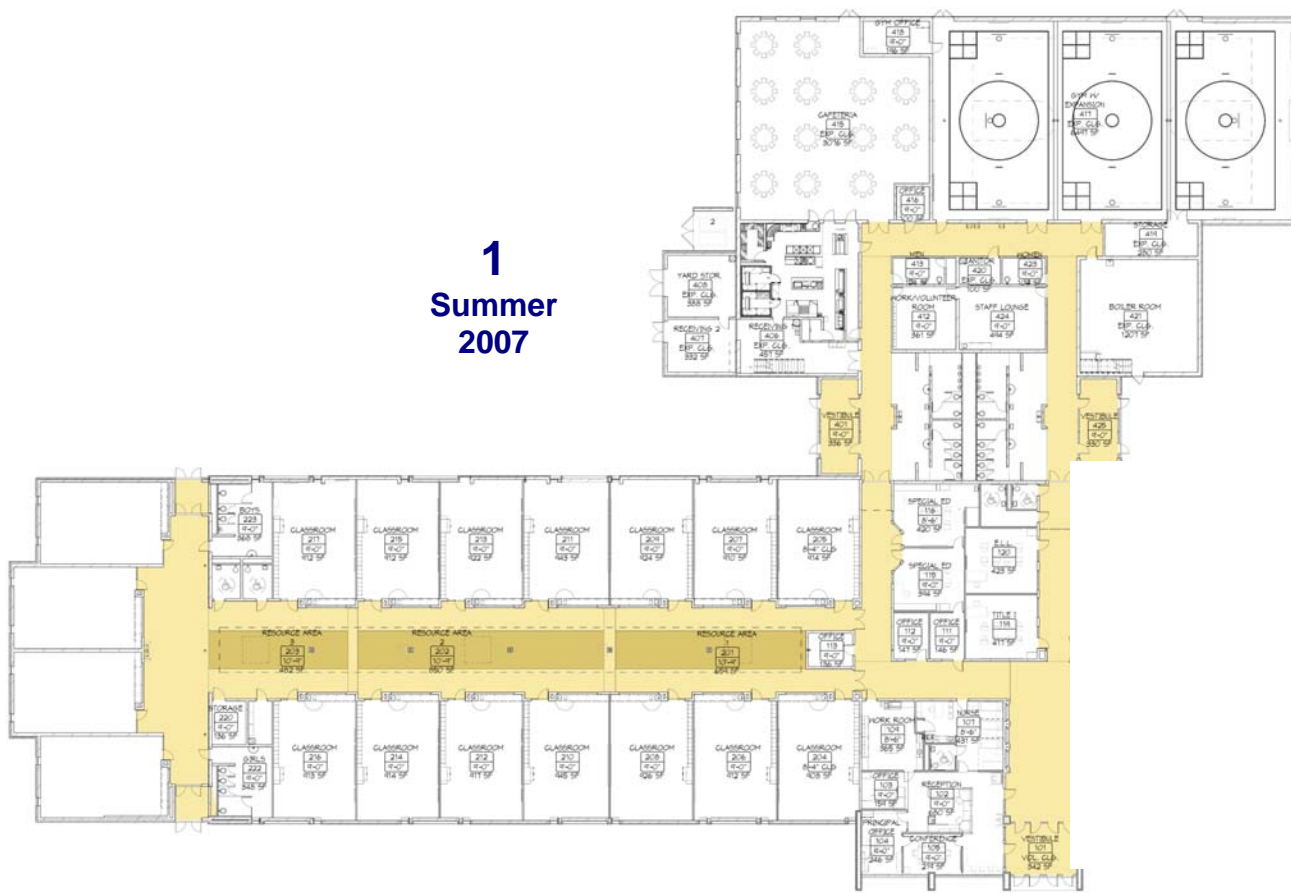
- Move west-end classrooms from the center of the wing and reconstruct against the outside walls.
- Reconstruction project will also result in additional classrooms
- 20' wide hallways on the west side of the building will allow for teaching stations such as pull-outs, Title 1
- Natural light from skylights in the widened hallway will flow into the classrooms which will have windows facing the hallway
- New regular education classrooms on the west side of building will be approximately 900-950 square feet
- Deferred maintenance projects will include:
  - ♦ refurbished mechanical systems
  - ♦ new carpet in classrooms
  - ♦ asbestos abatement
- ♦ program incorporated to clean duct work
- ♦ plumbing and piping replacement
- ♦ new air handling systems
- ♦ incorporate same color palate in all schools
- Expansion of the parking lot, creating a safer separation of bus and auto traffic
- Parking lot drainage issues will be corrected
- Public vestibule at the main entrance. The remodeled entrance will have one set of doors instead of three
- Addition of vestibules with airlock entries near the kitchen and boiler room areas
- Expansion of kitchen receiving area
- Expansion of gymnasium area
- Modifications to the administrative area
- Card key access may be used at front entrance and receiving area
- Lockers incorporated into classrooms
- Addition of music and art rooms near the new kindergarten classrooms
- Complete roof replacement by the end of construction projects
- Stage in gymnasium will be removed to provide additional cafeteria seating
- Windows will be added in the cafeteria to provide natural light. The cafeteria will become a multi-purpose space. Circular and rectangular tables with chairs will replace the current seating. (This new type of seating will be used in all schools in the district.)

***Construction costs at Park Terrace will be \$6.8 million***



**West elevation. One new feature will be the addition of windows, and far more natural light, in the school's cafeteria.**

**1**  
**Summer**  
**2007**



**Park**  
**Terrace**  
**Elementary**

*Above: Park Terrace projects for summer of 2007. West end, center, and north ends of the school.*

*Right: Projects for the summer of 2008. East end of the school.*

**2**  
**Summer**  
**2008**

